

Icelandic Prison System, and the challenges it is facing.

Bryndís Jónsdóttir MA Criminology

Overview

- Icelandic Prisons
- Community Service
- Changes in the Icelandic Society
- Challenges faced by police, prison and boarder controle
- Solutions

The Prison and Probation Administration of Iceland

- Responsible for overseeing prisons and probation services.
- The country follows a Nordic model of incarceration, which emphasizes rehabilitation, humane conditions, and reintegration into society.



**Total
178 cells (182)**

Prison Kvíabryggja:
Open prison - 22 inmates

Prison Hólmsheiði:
For incoming prisoners, women and
remand 52 inmates (+ 4 remand cells)

Prison Sogni:
Open prison - 21 inmates

Prison Litla-Hrauni:
Closed prison – 83 fangar



Structure of the Icelandic Prison System

- Litla-Hraun

- Eyrarbakki in the south of the country
- Closed prison
- Opened in 1929
- 87 cells in 9 wards
- 57 employees (Prison guards, watch officers, office personnel, therapists, kitchen employees)

Litla-Hraun







31/10/2003



Stóra Hraun



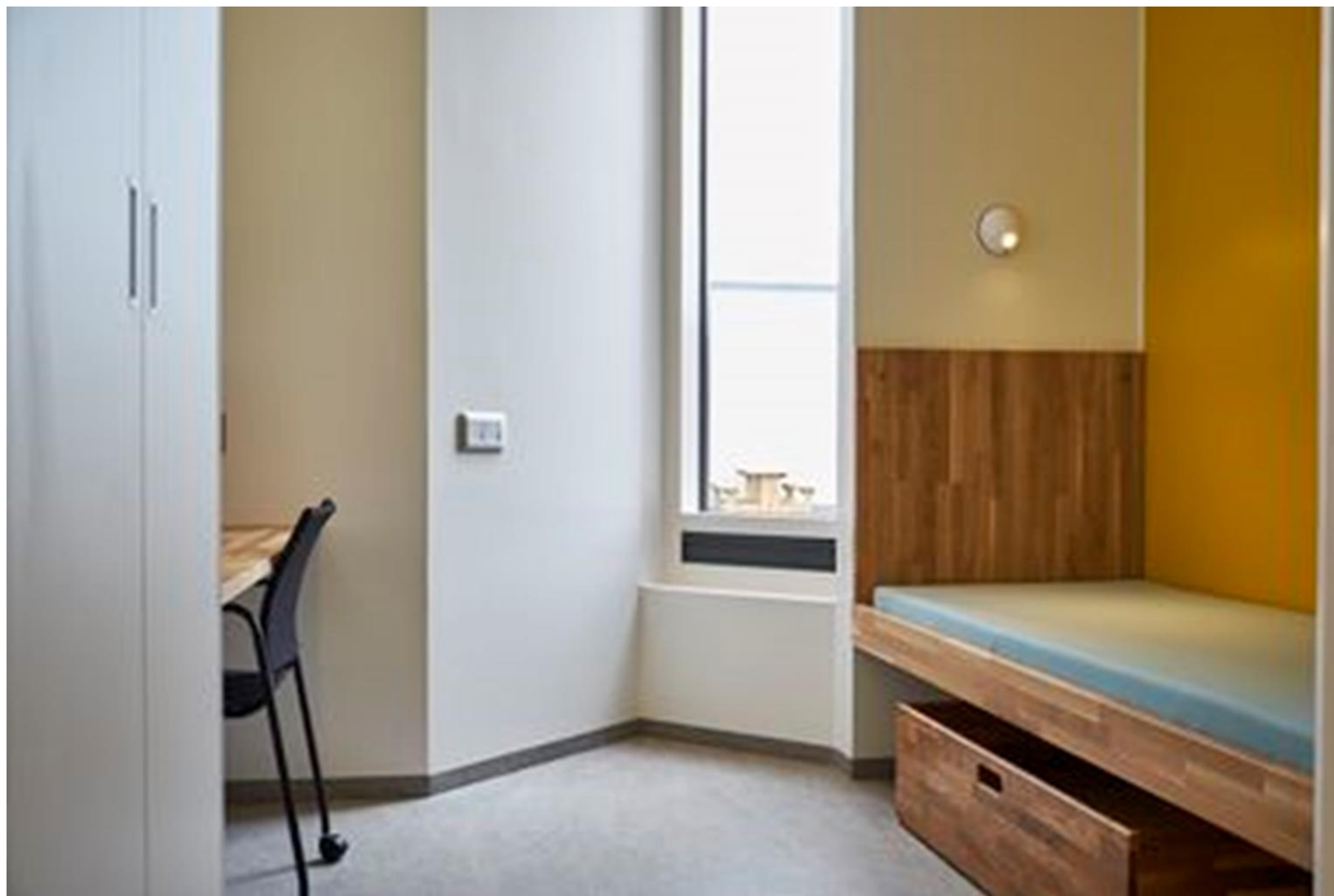
Hólmsheiði

- Arrival- and custody prison
- Reykjavík
- Closed prison Opened in 2016
- 56 cells and 4 for solitary confinement
- 8 divisions and holds 1 division for women prisoners
- 18 prison guards, 2 watch officers, 1 supervisor

Hólmsheiði







Sogn

- Sogn at Ölfus, in the south of Iceland
- Open Prison, Opened in 2012
- 21 rooms
- 12 prison guards, 1 watch officer

Sogn







Kvíabryggja

- Kvíabryggja is in Snæfellsnes the west coast of Iceland
- Open prison
- Opened in 1963
- 22 rooms
- 12 prison guards, 1 director and 1 office worker.

Kvíabryggja



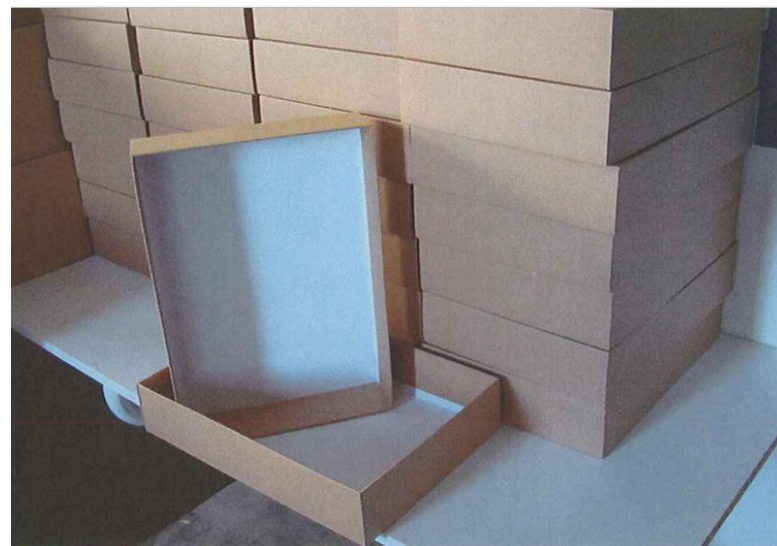








Fangaverk



Fangaverk



ALLAR VÖRUR
Fluguhnýtingataska
59,000 kr.



ALLAR VÖRUR
Vatnslituð mynd A3 (4)
3,500 kr.



ALLAR VÖRUR
Vatnslituð mynd A3 (3)
3,500 kr.



ALLAR VÖRUR
Margnota poki – minni gerð
4,990 kr.



Halfway House - Vernd

- Vernd is in Reykjavík
- Halfway House
- Opened in 1960
- 16 rooms, 8 double, 8 single
- 1 Chief executive Officer
CEO
- 1 Director
- 1 Electronic Surveillance
- 1 Private household cook



Closed
Prison

Open
Prison

Halfway
House

Electronic
Surveillance

Probation

Community Service

- Sentences up to 24 months can be served with Community Service
- People can apply for Community Service
- Not ruled by the courts
- Application reviewed by the Prison Administration
- Then called in for an interview and an assessment if they are fit for Community Service

Changes in Society

In the last two decades immigration has risen up to 18% and the population was 389.450. January 2025

Innflytjendur

Innflytjandi Aðrir



Trust in the police

Stop and Search

Racial Profiling

Over-Policing

Under-Policing

Procedural Justice

Boarder Controle

- Law on Boarders
- Got funding, need more
- Zero Tolerance Policies
- Resulting in more people in custody

Prison System

- Overcrowding
- Custody
- Housing Resources

Solutions

- Enhanced Police Education
- Expanded Use of Electronic Surveillance
- Investment in Housing Resources

Thank you for your attention.